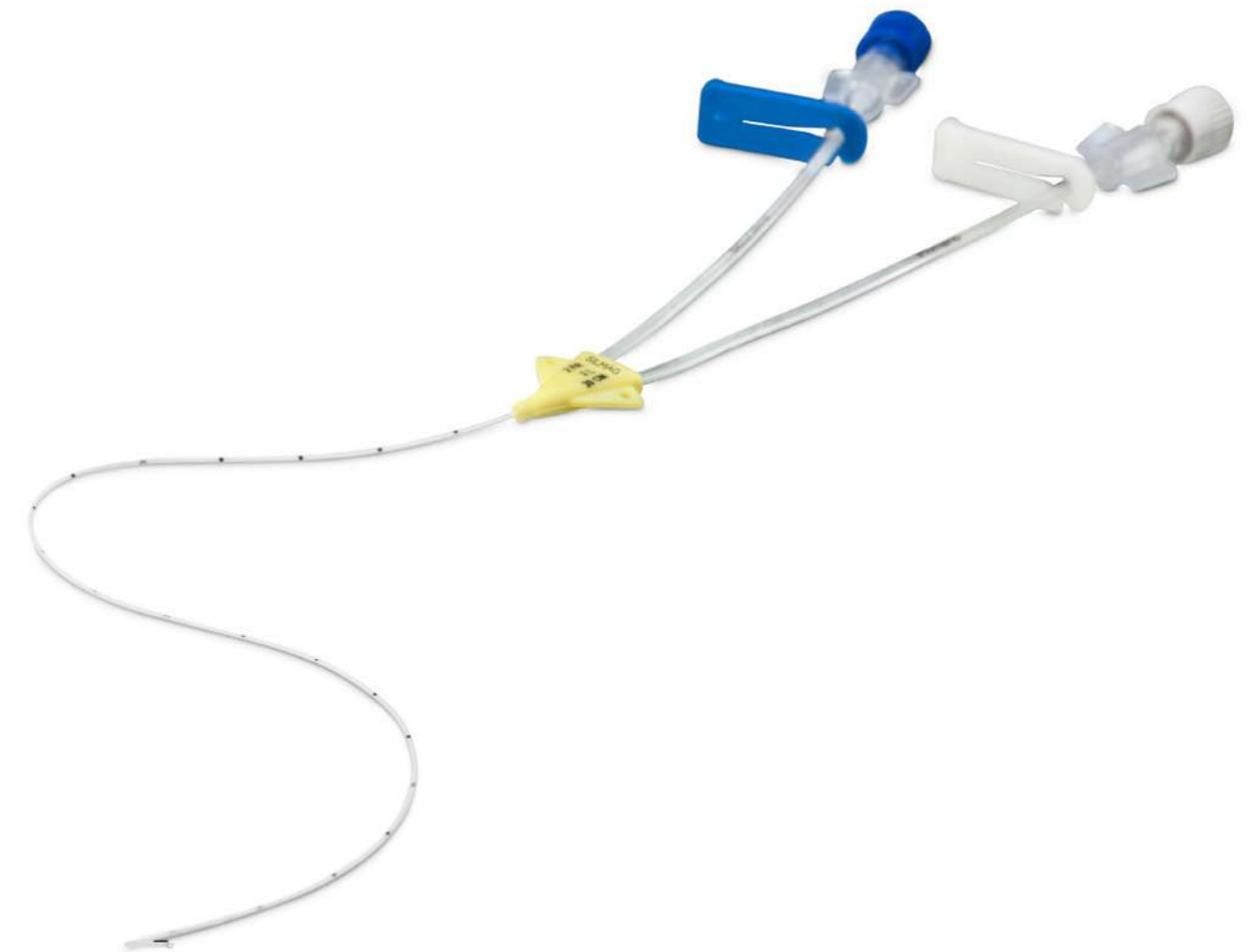


BITA PICC



SILMAG

www.gruposilmag.com



Peripherally inserted central catheter
(intravenous picc)



BSI British Standards Institution
Quality Management System
N° FM 664794
ISO 13485



This product has been designed to:

- Administer intravenous solutions in newborns and paediatric patients requiring prolonged parenteral treatment.
- Hospitalized patients in critical care units.
- Patients requiring vasoactive drug treatments.
- TPN (Total Parenteral Nutrition).
- Patients requiring prolonged fasting periods.
- Patients with metabolic disorders.

Polyurethane
100%
Catheter



Optimal fixing safe coupling support surface indicating size and length information.

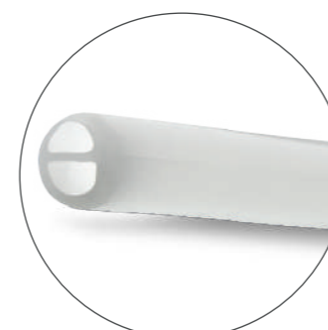
- 100% polyurethane catheter .
- Centimetre marks and painted tip to verify correct placement and catheter removal.
- Complete range of sizes for newborns and extreme prematures.
- Single and double lumen type available
- Enables administration of hyperosmolar solutions.
- Peel off introducer and side eye needle. Clear sheath to verify venous blood return.
- Sterile blister with cap, suitable to place on the surgical field once the peelable envelope has been removed.



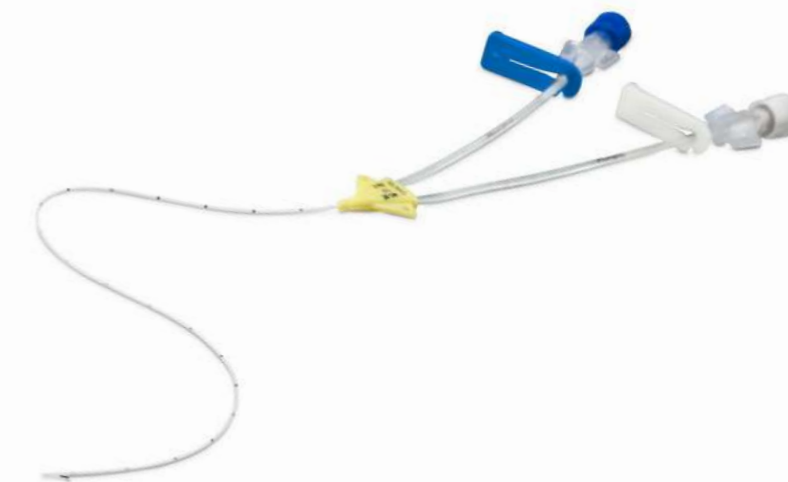
100% radiopaque polyurethane and echogenic catheter.



Simple lumen



Double lumen



Kit:



Needle-free connectors.



Metal forceps.



Disposable measuring tape.



Peel off introducer.



Silicone haemostatic tourniquet.

SIMPLE LUMEN				
Size	Ø Outer (mm) X Ø Inner (mm)	Length (cm)	Flow rate (ml/min)**	Code
1 Fr*	0,40 x 0,20	15	2	581-01-15-S
		20	1,5	581-01-20-S
2 Fr	0,62 x 0,30	15	10	581-02-15-S
		30	6,5	581-02-30-S
3 Fr	1,00 x 0,50	30	16,50	581-03-30-S
		60	9,5	581-03-60-S
4 Fr	1,35 x 0,80	30	-	581-04-30-S
		60	-	581-04-60-S
5 Fr	1,65 x 1,05	60	-	581-05-60-S
DOUBLE LUMEN				
2 Fr	0,64 x (0,20 x 2)	20	2x4,0	581-02-20-D
		30	2x3,0	581-02-30-D
3 Fr	0,95 x (0,30 x 2)	50	2 x 11,0	581-03-50-D
4 Fr	1,40 x (0,40 x 2)	60	2 x 20,0	581-04-60-D

* 1.0 FR size does not include peel off introducer.

** Measurement made at 1 bar of pressure.