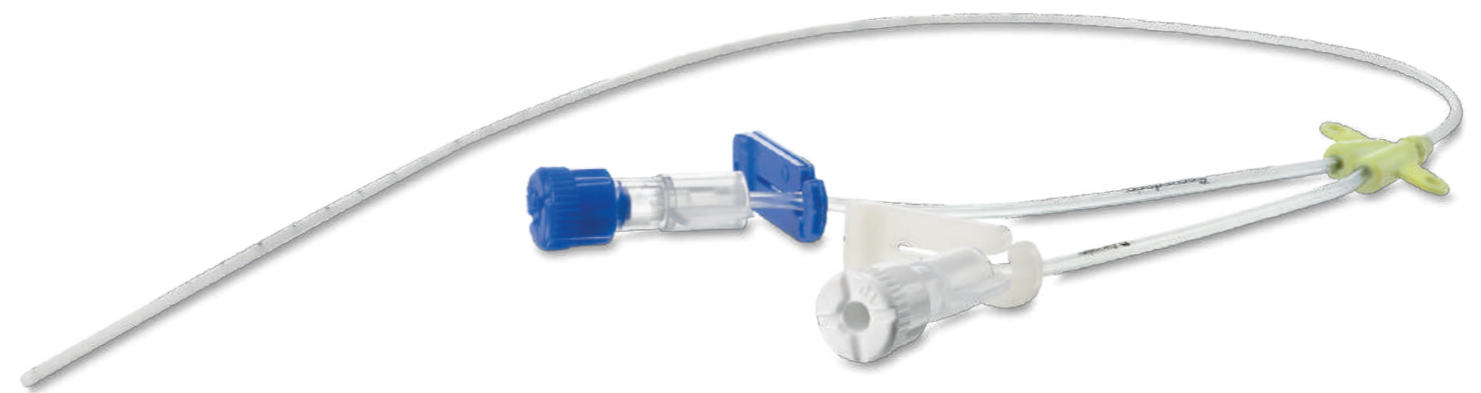


Umbilical artery catheter single and double lumen



SILMAG

www.gruposilmag.com



BSI British Standards Institution
Quality Management System
N° FM 664794
ISO 13485

Umbilical artery catheter single and double lumen

Code 544
Code 544-D



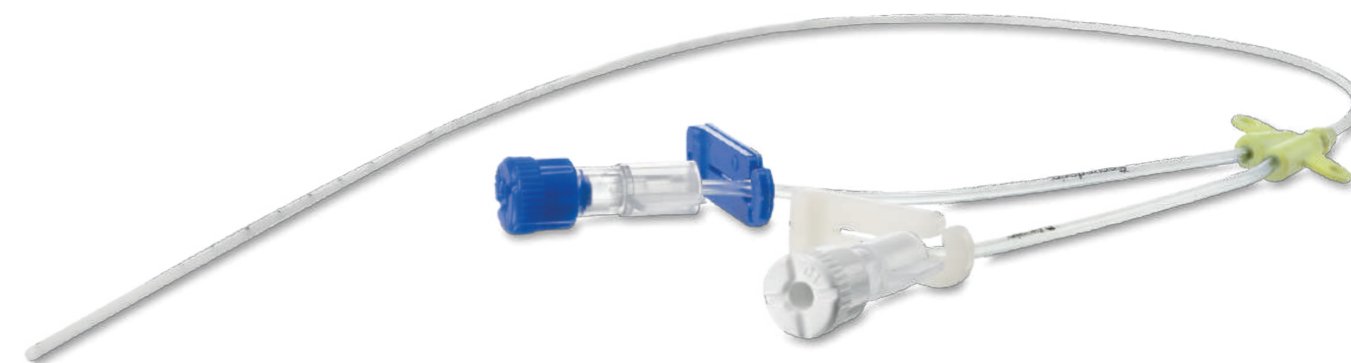
This catheter has been designed for placement in the umbilical vein of critically neonates hospitalized in neonatal intensive care units. Used for incompatible solutions or blood sample collection and in patients with blood type incompatibility requiring an exchange transfusion.

Polyurethane
100%
Catheter

- Centimetre marks from 4 cm to 24 cm.
- Rounded end reduces the risk of vessel injury.
- Easy to handle and slide.
- Marking ensures positioning and maintenance during treatment.



100% radiopaque polyurethane and echogenic catheter.
Numbered every 1 cm.



Full-length double lumen catheter for
infusion of incompatible solutions.



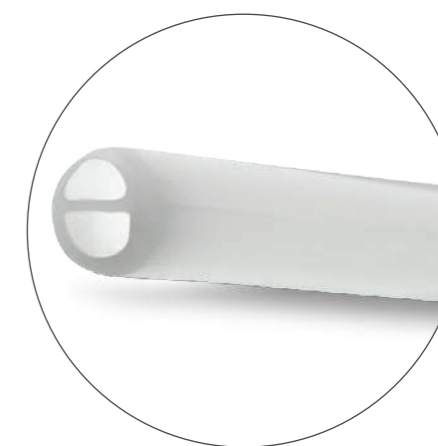
Single lumen



Features a proximal
end Luer lock



Features a proximal end Luer lock.



Double lumen

Code	Size (FR)	Outer Ø (mm)	Inner Ø (mm)	Length (cm)
544-25	2,5	0,80	0,40	30,5
544-35	3,5	1,15	0,60	41
544-40	4,0	1,40	0,78	41
544-50	5,0	1,60	0,80	41
544-60	6,0	2,00	1,00	41

Code	Size (FR)	Outer Ø (mm)	Length (cm)
544-35-D	3,5	1,30	38
544-50-D	5,0	1,75	38